

PROFESSIONAL LOUDSPEAKER

12" PA Fullrange

General Specifications

Nominal diameter	308mm/12in
Power rating ¹	250Wrms
Nominal impedance	8 Ω
Sensitivity ²	98dB
Frequency range	50-10,000Hz
Voice coil diameter	50mm/2in
Chassis type	Pressed steel
Magnet type	Ferrite
Magnet Diameter	156mm/6.1in
Magnet weight	1.6kg/56Oz
Coil material	CCAW
Former material	Polyamide
Cone material	Pressed paper
Surround material	Cloth-sealed
Suspension	Single
Xmax	±1mm/0.08in
Gap depth	8mm/0.31in
Voice coil winding width	10mm/0.40in

Small Signal Parameters

D	0.26m/10.24in
Fs	58.0Hz
Mms	43.23gm
Mmd	36.31gm
Qms	7.21
Qes	0.86
Qts	0.77
Re	5.6 Ω
Vas	69.19 ltrs
Bl	10.57 Tm
Cms	0.174mm/N

Mounting Information

Diameter	308mm/12.2in
Overall depth	132mm/5.2in
Cut-out diameter	278mm/10.94in
Mounting slot dimensions	ø6mm/0.24in
Number of mounting slots	6
Mounting PCD range	296mm/11.65in
Unit weight	4.5kg

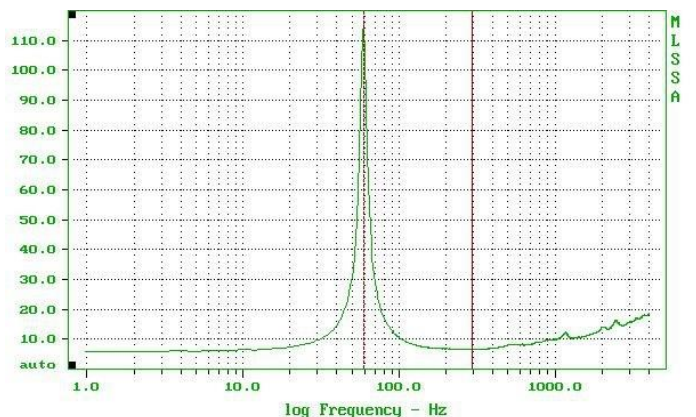
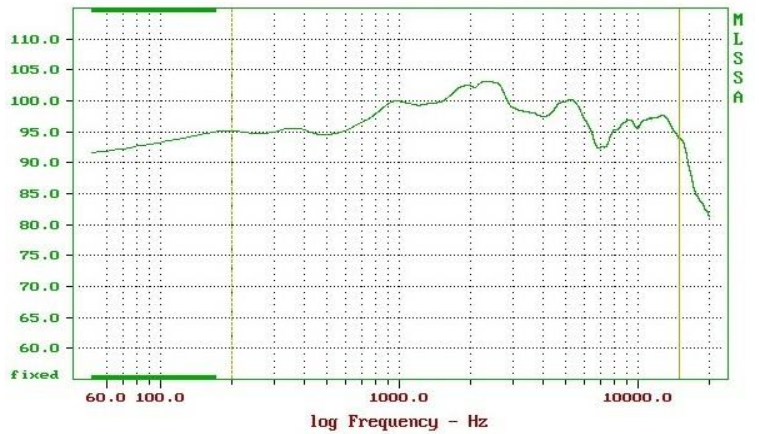
Packed Dimensions & Weight

Single pack size W x D x H	325mm x 325mm x 160mm /12.79in x 12.79in x 6.3in
Single pack weight	5.6kg



- 12" twin cone drive unit with extended high frequency response
- 2" high temperature CCAW voice coil for increased reliability and 250Wrms (AES standard) power handling
- Optimised cone neck/voice coil assembly for increased strength, minimising high frequency distortion and improving sound quality
- Secondary cone terminated by pressure formed cloth dust cap for enhanced mid-band clarity
- High efficiency magnet structure design delivers improved sensitivity
- Double roll surround for greater excursion control and smooth frequency response

Frequency Response @ 2.83V/1m



1. Tested for two hours using a continuous, band-limited pink noise signal as per AES standard.
Power calculated on minimum impedance. Loudspeaker tested in free air.

2. Measured on axis at 1W, 1m in 2 pi

3. Xmax derived from: (voice coil winding width-gap depth)/2.